

## BREAST AWARENESS

Most women look for changes in their breasts – both by feeling for lumps and looking at them carefully. It is something that is an important part of taking care of your body. Indeed, doctors recommend that women make an effort to know how their breasts look and feel normally.

This is often called “breast awareness”. Most women know they should check for lumps that are out of the ordinary. However, there are other changes to your breasts that you should look out for too.

### These include:

- A change in the size or shape of your breast
- A change in the skin – particularly dimpling or puckering
  - A change in the appearance of the nipple or a discharge from the nipple
- Breast pain that does not go away after a period
  - Lumpy areas or thickening of the breast tissue

Most new lumps or other breast changes are not serious and can be easily treated if necessary. Should they prove to be harmful then there is a very good chance of successful treatment.

And the earlier any problems are found, the better the chances of recovery. That is why it is important to be “breast aware” and to be on the lookout for any changes.

### CONTACT INFORMATION

**M & L Medical Suppliers CC**

**Tel: 021 855 32 97**

**info@fairylight.co.za**

# fairylight™

*enlightened breast awareness*

**SPECIAL LAUNCH PRICE R1250 INCL VAT & POSTAGE**

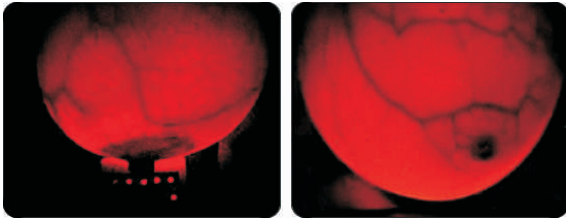


The Fairylight™ Analyser is a new health and wellbeing device for women to help notice any changes in their breasts over time.

Fairylight™ Breast Analyser is a new health and well being product for women. It helps women notice any changes in their breasts over time.

With Fairylight™ Breast Analyser you get a new view of your breasts. Fairylight™ Breast Analyser shines a powerful yet harmless light through the breast tissue so that you can see some of the details inside. That way you can get to know what's normal for you, notice any changes and hopefully feel more confident that you're looking after your body the way you'd like to.

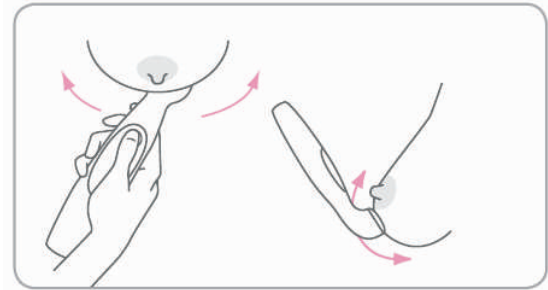
And the earlier any problems are found, the better. That is why it is important to be "breast aware" and to be on the lookout for any changes.



**You will see veins and other blood vessels as dark lines in your breast. These are totally normal. Around the nipple you may see a circle of small dots – these are part of your mammary glands. These are also totally normal. These pictures are examples of normal healthy breasts.**

## PRINCIPLE:

Fairylight is based on the transillumination process. It is essentially a hand held red light source which is used to illuminate the breast and allow the user to examine their own breasts in a darkened environment. This product is intended to be a relatively low cost, simple hand held, home-use device to assist women to be breast aware.



## LIGHT WAVELENGTH & ABSORPTION:

It shines bright red light through the breast tissue and is very effective at illuminating the inside of the breast. The red light at 620 nanometres is transmitted relatively well by the breast tissue and is strongly absorbed by Hemoglobin in the blood. When used in a dark environment the user can clearly view some of the internal structure of their breast including their own blood vessels. If there is a breast abnormality such as a blood filled cyst or breast cancer, the device will show a darker shadow associated with the absorption of the red light by the blood associated with the abnormality. The product is intended to be used in addition to normal breast self examination and as a further check of the breast using a visual and tactile means.

**The device is not intended to be used as a diagnostic tool for breast self-examination but as an aid to women to be used to support the breast self-examination process.**

For more info on the product please visit  
[www.fairylight.co.za](http://www.fairylight.co.za)